

**User Manual  
of  
RecoveryMagic**

**SkyData Company Limited**

Copyright 2000-2004 SKYDATA Company Limited

Copyright of RecoveryMagic would be protected by international intellectual laws and treaties.

Contact Information:

SkyData Company Limited

603 Cheongang Bldg. 402-3 Sindorim Dong, Guro Ku

Seoul, Korea 152-887

Phone : 82-2-2679-2516

Home Page: [www.RecoveryMagic.com](http://www.RecoveryMagic.com)

e-mail : [info@recoverymagic.com](mailto:info@recoverymagic.com)

# 1. Introduction of RecoveryMagic

## 1.1. Product Summary

RecoveryMagic is a recovery solution that provides the ultimate protection for a PC. RecoveryMagic recovers PC system with a pre-saved backup from any virus, cyber attack, software or hardware driver conflict, or user-induced error in 3 seconds or less. RecoveryMagic allows users to restore their PC to its original state without numerous recovery CDs, long support calls or having to re-image an entire environment from a hidden partition.

## 1.2. Preferred usage of RecoveryMagic

PC's which is located in public place and shared by anyone access.

Internet Café, Schools and Computer labs

Enterprises, Government Agencies etc. having lots of PC

## 1.3. System Requirements

Operating Systems: Windows 98/ Me/ NT/ 2000/ XP.

CPU: Pentium or Higher

Memory: Minimum 64M Byte

HDD: Minimum 3,2 GB

## 1.4. Important Information

### - Software Requirements

. The Windows operating system must be installed on the C: drive.

### - Before Installation

. Run a virus scan and clean the PC of any viruses. In case of saving the system with virus, RecoveryMagic may not restore the system properly.

. It is recommended that you scan and defragment the hard drive.

. If the computer is shared, set the CMOS password to protect against unauthorized use.

. RecoveryMagic supports multiple partitions on a single hard disk. In the case of multiple hard disks the hard disk containing Drive C: is the only one that can be protected.

. Formatting HDD and Reinstall of Windows OS is strongly recommended in advance to installation of RecoveryMagic to secure the clean state of PC.

# 2. Installation



Double click the Setup Icon and click <Next> button on the Dialog Box

The RecoveryMagic would be installed in the computer. It is strongly recommended to execute scandisk and defrag in advance for the proper installation of RecoveryMagic.



Read the End User License Agreement and click Yes to accept the terms of the License Agreement and begin the installation



RecoveryMagic is preparing the installation.



Enter the license number or CD-Key.



Verify that your computer meets the requirements listed. If it does not, you should cancel the installation and run the installation again later after the requirements have been met.



Configuration of program.

**- Password**

Set a password to prevent unauthorized access to RecoveryMagic. (Password must be 8 characters or less)

**Important:** If password is lost, please contact us.

[www.recoverymagic.com](http://www.recoverymagic.com),

[info@recoverymagic.com](mailto:info@recoverymagic.com),

Tel. 82-2-2679-2516

**- Recovery Mode**

Manual mode

System would be restored manually by selecting "recover" in the menu.

Automatic mode

System would be restored automatically at every system boot & restart.

Periodic scheduled mode

System would be restored on a periodic time schedule. Select the Scheduled mode and enter the number of days (0~99). Set 0 if you want to enable manual recovery. Available in Manual Mode only.

**- Select partition to be protected and restored.**

Select partition to be protected and restored. C: partition would be selected automatically.



**Setup SafeData**

SafeData is a service patch that moves the data files of Outlook Express, Favorites and My Documents in other partition that would not be protected and would not be restored to prevent data file from being lost by executing recovery.

SafeData would be available when HDD has more than 2 partitions and one of partitions should be non-protected partition.



A summary of the settings you've made is displayed on this screen.

Verify that the settings you've made are correct and Click <Next> to apply them. If you find something that you'd like to change, press the Back button and make the changes.

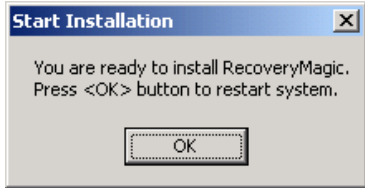
Note: After you click Install, it may take a few moments for SafeData to move the protected data to the new partition.



Once the installation setup is completed, press <Finish> and <OK> to restart the system and complete the installation process.

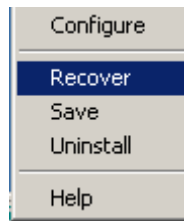
During restart process, the current PC state would be saved as backup inside HDD. Recovery process is to replace the crashed HDD with a pre-saved backup.

Restarted system will show a RecoveryMagic icon, **R**, at the Task Bar in right-low corner of monitor.



### 3. How to use RecoveryMagic in Windows mode

click the right-button of mouse on "**R**" icon



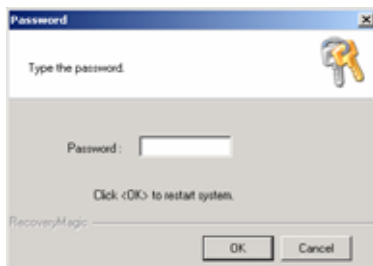
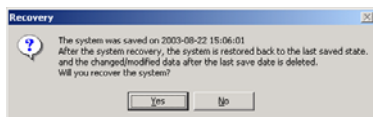
#### ● Recover

If the system is not working properly or a fatal error occurs, you can restore the damaged system by running the RecoveryMagic recovery process. The recovery process will restore the system to its exact state on the date and time of the last save. The date and time of the last saved state are shown in the RecoveryMagic dialog box.

Press <Yes> to continue the recovery process.

You will be asked to enter your password. Clicking <OK> will initiate the recovery process. The process will occur during reboot.

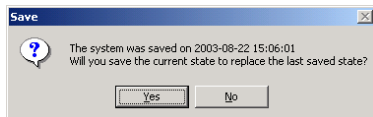
**Warning!** You may loose the data created since the date and time of last save by restoring system.



#### ● Save

Saving will replace the last saved state with the current system state.

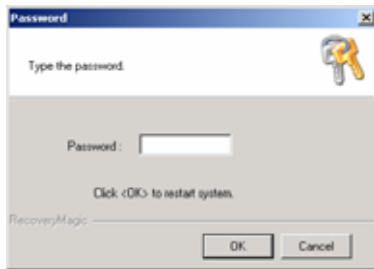
Remember: A virus scan should be run prior to saving a system state to ensure that the system is clean of any virus.



#### ● Uninstall

Uninstall will completely remove RecoveryMagic from the system.





<YES> to restore the current system state to its exact state on the date and time of the last save and to continue Uninstall process.

<NO> to continue Uninstall process with current system state

<Cancel> to cancel Uninstall process.

Input password and click <OK> to continue Uninstall process.

**Warning!** You may loose the data created since the date and time of last save by restoring system.



### ● Configure (change of setting)

#### - Password [Change password]

Set a password to prevent unauthorized access to RecoveryMagic. (Password must be 8 characters or less)

**Important:** If password is lost, please contact us.

[www.recoverymagic.com](http://www.recoverymagic.com),

[info@recoverymagic.com](mailto:info@recoverymagic.com),

Tel. 82-2-2679-2516

#### - Boot Password

Set a password to prevent unauthorized access to PC system. (Password of RecoveryMagic would be used as Boot password.)

By enabling this option, you will be asked to input Boot password at every boot.

**Important:** If password is lost, the system cannot be used.

#### - Recovery Mode

Manual mode

System would be restored manually by selecting "recover" in the menu.

Automatic mode

System would be restored automatically at every system boot or restart.

Periodic scheduled mode

System would be restored on a periodic time schedule. Select the Scheduled mode and enter the number of days (0~99). Set 0 if you want to enable manual recovery. Available in Manual Mode only.

#### - CMOS Protection

This is to set automatic CMOS recovery at every boot cycle. The Automatic Recovery of CMOS is to recover CMOS during a boot cycle. Its purpose is to protect the CMOS from virus attacks.

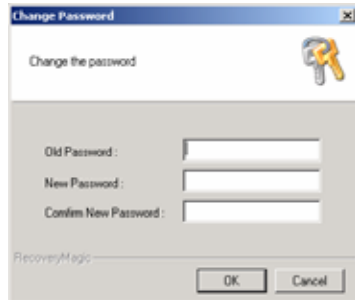
**Note:** If reboot is continuously repeated after setting CMOS to Auto Recovery, Press <Yes> in the Dialog Box displayed when the Home key is pressed during system reboot.

#### - Message Display

To show a message that RecoveryMagic was installed and work properly. "Protected by RecoveryMagic"  
Select <No> to hide the message.

#### - Protected Partitions

The partition could be set during the installation process only and cannot be changed thereafter



#### - Change password

To change the existing password with new password.  
(Password must be 8 characters or less)

Click <OK> will restart the system to confirm new password.

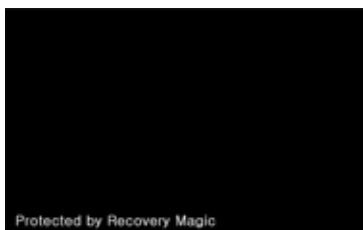


#### - Boot Password

Boot password is to prevent unauthorized access to PC system. (Password of RecoveryMagic would be used as a Boot password.)

By enabling this option, you will be asked to input Boot password at every boot.

**Important:** If password is lost, the system cannot be used.



#### - Message Display

To show a message that RecoveryMagic was installed and work properly. "Protected by RecoveryMagic"  
Select <No> to hide the message.

## 4. How to use RecoveryMagic in DOS boot mode (by pressing HOME key at boot – when a message comes up "Protected by RecoveryMagic")



A message comes up at boot. While the message is blinking for 5 seconds, press HOME key to access main menu of RecoveryMagic.



The DOS boot mode is used to correct Windows® problems when the Windows operating system is unbootable. To use this feature, press the Home Key during a reboot and enter the password when prompted.

Main menu will be displayed. – Recover, Change password and Uninstall.



You can select one of menus: System Recovery or Program Uninstall using Up/Down key. You can exit from this menu at any time by pressing Ctrl+Alt+Del.



● Recover

Select System Recovery to restore the system to the last saved state.



The recovery process will restore the system to its exact state on the date and time of the last save. The date and time of the last save are shown in the RecoveryMagic dialog box.

Select <Yes> will restore the system.

**Warning!** You may loose the data created since the date and time of last save by restoring system



● Change password

To change the existing password with new password



If password is lost, please contact SkyData Co., Ltd. to get a new password. (Tel. 82-2-2679-2516)



- **Uninstall**

Uninstall will completely remove RecoveryMagic from the system.

<YES> to restore the current system state to its exact state on the date and time of the last save and to continue Uninstall process.

<NO> to continue Uninstall process with current system state.

**Warning!** You may loose the data created since the date and time of last save by restoring system.